

INDEX.

[Names in small capitals refer to Families, &c.; those in roman type to the chief reference to each species included in the work; those in italics to species incidentally mentioned, synonyms, &c.]

	Page		Page		Page
ACANTHOPHRYNUS	56	<i>Broteochactas delicatus</i>	58	Centruroides margaritatus	30
<i>Acanthophrynus</i>	49	— <i>golhneri</i>	15	— <i>margaritatus</i>	21, 27, 29, 31, 32, 34
— <i>spinifrons</i>	57	BUTHIDÆ	19	— <i>mulatinus</i>	34
<i>Admetinae</i>	49	<i>Buthide</i>	1	— <i>nebulosus</i>	34
<i>Admetus</i>	50, 57	<i>Buthus biaculeatus</i>	33	— <i>nigrescens</i>	36
— <i>fuscimanus</i>	56	— <i>californicus</i>	24, 26	— <i>nigrescens</i>	21
— <i>palmatus</i>	50	— <i>carolinianus</i>	24, 26	— <i>nigrifrons</i>	34
— <i>pumilio</i>	58	— <i>emarginaticeps</i>	6	— <i>nigrimanus</i>	35
AMBLYPYGI	49	— <i>filum</i>	39	— <i>nigrimanus</i>	21, 36
<i>Amblypygi</i>	45	— <i>hirsutus</i>	6	— <i>nitidus</i>	28
AMMOTRECHA	64	— <i>vittatus</i>	24, 26	— <i>nitidus</i>	20
<i>Ammotrecha</i>	67	CENTRUROIDES	19	— <i>ochraceus</i>	29
— <i>limbata</i>	66	<i>Centruroides</i>	36, 37	— <i>ochraceus</i>	21, 30
— <i>limbata</i>	64	— <i>bertholdi</i>	27	— <i>ornatus</i>	26
— <i>peninsulana</i>	65	— <i>bertholdi</i>	21	— <i>ornatus</i>	20, 21
— <i>peninsulana</i>	64	— <i>biaculeatus</i>	34	— <i>rubricauda</i>	34
— <i>picta</i>	65	— <i>bicolor</i>	35	— <i>rubricauda</i>	21
— <i>picta</i>	64, 66	— <i>bicolor</i>	21, 36	— <i>subgranosus</i>	26
— <i>saltatrix</i>	66	— <i>californicus</i>	25	— <i>subgranosus</i>	21
— <i>stolli</i>	65	— <i>congener</i>	34	— <i>thorelli</i>	22
— <i>stolli</i>	64, 67	— <i>de geeri</i>	32	— <i>thorelli</i>	20
<i>Androcottus</i>	39	— <i>elegans</i>	22	— <i>vittatus</i>	24
<i>Androctonus biaculeatus</i>	33	— <i>elegans</i> ..	21, 24, 25, 26, 27, 28	— <i>vittatus</i> ..	20, 21, 23, 25, 26, 27
ANUROCTONUS	13	— —, subsp. <i>insularis</i> ..	24	— —, subsp. <i>suffusus</i> ..	25
<i>Anuroctonus</i>	5, 14	— —, subsp. <i>nigrovariatus</i> ..	24	<i>Centrurus</i>	19, 36
— <i>phaedactylus</i>	14	— —, subsp. <i>pallidiceps</i> ..	24	— <i>bertholdi</i>	27
— <i>phaedactylus</i>	6	— <i>exilicauda</i>	20	— <i>biaculeatus</i>	33
<i>Atræus biaculeatus</i>	33	— <i>flavopictus</i>	28	— <i>bicolor</i>	35
— <i>edwardsii</i>	35, 36	— <i>flavopictus</i>	20, 29	— <i>de geerii</i>	30
<i>Atræus californicus</i>	24	— <i>fulvipes</i>	36	— <i>elegans</i>	22, 23, 24
— <i>filum</i>	39	— <i>fulvipes</i>	21	— <i>flavopictus</i>	28
— <i>hemprichii</i>	37	— <i>fulvipes</i>	32	— <i>fulvipes</i>	36
— <i>nigrifrons</i>	33	— <i>gambiensis</i>	32	— <i>gambiensis</i>	30
— <i>obscurus</i>	45	— <i>gracilis</i>	32	— <i>gracilis</i>	33
— <i>sayi</i>	33, 34	— <i>gracilis</i> ..	21, 34, 35, 36	— <i>granosus</i>	30, 32
<i>Biton</i>	68	— <i>granosus</i>	27, 28, 32	— <i>hemprichii</i>	37
<i>Broteas panamensis</i>	16	— <i>heterurus</i>	34	— <i>heterurus</i>	33
BROTEOCHACTAS	15	— <i>infamatus</i>	23, 28	— <i>infamatus</i>	22
<i>Broteochactas</i>	5	— <i>limbatus</i>	35	— <i>infamatus</i> ..	24
— <i>delicatus</i>	15	— <i>limbatus</i> ..	21	— —, var. <i>nigrovariatus</i> ..	24
		— <i>limpidus</i>	23, 24	— <i>junceus</i>	37

	Page		Page		Page
<i>Centrurus limbatus</i>	35	<i>Eremobates elongatus</i>	62	<i>Isometrus europæus</i>	38
— <i>limpudus</i>	22	— <i>elongatus</i>	60	— <i>flum</i>	39
— <i>margaritatus</i>	30	— <i>formicarius</i>	62	— <i>maculatus</i>	39
— <i>nigrescens</i>	36	— <i>formicarius</i>	60, 63	<i>Lychas americanus</i>	39
— <i>nigrimanus</i>	35	— <i>formidabilis</i>	63	— <i>gabonensis</i>	39
— <i>nigrovariatus</i>	24	— <i>formidabilis</i>	60	— <i>guineensis</i>	39
— <i>nitidus</i>	28	— <i>geniculatus</i>	63	— <i>maculatus</i>	39
— <i>ochraceus</i>	29	— <i>lentiginosus</i>	62	— <i>paraensis</i>	39
— <i>olivaceus</i>	24	— <i>lentiginosus</i>	60	MASTIGOPROCTUS	46
— <i>phaiodactylus</i>	14	— <i>toltecus</i>	61	— <i>giganteus</i>	47
— <i>republicanus</i>	28	— <i>toltecus</i>	60	— <i>giganteus</i>	46, 48
— <i>rubricauda</i>	34	EREMOBATINÆ	59	— —, subsp. <i>mexicanus</i> ..	46, 48
— <i>subgranosus</i>	26	<i>Galeodes limbatus</i>	64, 66	— —, subsp. <i>scabrosus</i> ..	46, 48
— <i>tenuis</i>	28	<i>Gluvia</i>	59, 64, 68	— <i>liochirus</i>	48
— <i>thorelli</i>	22	— <i>cinerascens</i>	59, 61	— <i>liochirus</i>	46
<i>Chaectas delicatus</i>	15	— <i>elongata</i>	62	— <i>mexicanus</i>	48
— <i>granosus</i>	18	— <i>formicaria</i>	62	MEGACORMUS	17
— <i>opacus</i>	16	— <i>præcox</i>	68	<i>Megacormus</i>	5
<i>Cleobis</i>	64	— <i>tolteca</i>	61	— <i>granosus</i>	18
— <i>hirsutus</i>	67	HADRURUS	5	— —, var. <i>dilutus</i>	16, 17
— <i>limbata</i>	66	<i>Hadrurus</i>	4, 8	— <i>segmentatus</i>	18
— <i>saltatrix</i>	66	— <i>aztecus</i>	7	<i>Neophryninae</i>	49
— <i>stolli</i>	65	— <i>aztecus</i>	6	<i>Neophrynus</i>	50
<i>Dacurus galbivus</i>	2	— <i>hirsutus</i>	6	— <i>fuscimanus</i>	56
DÆSIA	68	— <i>hirsutus</i>	5, 7	— <i>palmatus</i>	50
<i>Dæsia</i>	64	HEMIBLOSSIA	67	— —, var. <i>barbadensis</i> ..	51
— <i>præcox</i>	68	<i>Hemiblossia</i>	64	— <i>whitei</i>	52
DÆSIINÆ	64	— <i>bouvieri</i>	67	<i>Oncocentrus</i>	13
<i>Dæsiinae</i>	59	— <i>o'neili</i>	67	— <i>phæodactylus</i>	14
<i>Datames</i>	59	— <i>vittata</i>	67	OPISTHACANTHUS	1
— <i>caspari</i>	63	HEMIPHRYNUS	53	— <i>elatus</i>	2
— <i>formidabilis</i>	63	<i>Hemiphrynus</i>	49, 55, 56, 57, 58	— <i>kinbergi</i>	2
— <i>geniculatus</i>	63	— <i>aztecus</i>	54	— <i>lepturus</i>	2
— <i>lentiginosus</i>	62	— <i>aztecus</i>	53, 55, 56	<i>Opisthocentrus</i>	1, 2
— <i>pallipes</i>	61	— <i>lævifrons</i>	55	PEDIPALPI	45
— <i>præcox</i>	68	— <i>lævifrons</i>	53, 56	<i>Phalangium palmatum</i>	50
— <i>striatus</i>	63	— <i>raptator</i>	54	<i>Phassus</i>	39
<i>Dataminae</i>	59	— <i>raptator</i>	53, 55, 56, 57	— <i>americanus</i>	43
DIPLOCENTRINÆ	2	<i>Heteroctenus</i>	36	— <i>crassimanus</i>	44
<i>Diplocentrinae</i>	1	— <i>junceus</i>	36, 37	PHRYNIDÆ	49
DIPLOCENTRUS	2	HETEROOPHRYNINÆ	57	<i>Phrynus</i>	49
— <i>antillanus</i>	3	<i>Heterophryninae</i>	49	— <i>spinifrons</i>	57
— <i>antillensis</i>	3	HETEROOPHRYNUS	57	PHRYNINÆ	49
— <i>keyserlingi</i>	4	<i>Heterophrynus</i>	58	<i>Phrynopsis</i>	56
— <i>mexicanus</i>	3, 4	— <i>chiracanthus</i>	58	— <i>spinifrons</i>	57
— <i>rectimanus</i>	4	— <i>chiracanthus</i>	57	PHRYNUS	50
— <i>whitei</i>	3	ISCHNURINÆ	1	<i>Phrynus</i>	49, 53, 56, 57
— <i>whitei</i>	4	ISOMETRUS	38	— <i>barbadensis</i>	51
EREMOBATES	59	<i>Isometrus</i>	19, 39	— <i>barbadensis</i>	50, 52
— <i>aztecus</i>	60	— <i>americanus</i> , var. <i>andro-</i>		— <i>chiracanthus</i>	58
— <i>aztecus</i>	61	<i>cottoides</i>	43	— <i>fuscimanus</i>	56
— <i>caspari</i>	63	— <i>androcottoides</i>	43	— <i>macrops</i>	53
— <i>cinerascens</i>	61	— <i>crassimanus</i>	44	— <i>mexicanus</i>	56
— <i>cinerascens</i>	60, 62				

	Page		Page		Page
<i>Phrynus operculatus</i>	52	<i>Scorpio whitei</i>	3	<i>Tityus silvestris</i>	42
— <i>operculatus</i>	50	SCORPIONES	1	UROCTONUS	14
— <i>palmatus</i>	50	SCORPIONIDÆ	1	<i>Uroctonus</i>	5
— <i>parvulus</i>	51	SOLIFUGÆ	59	— <i>mordax</i>	15
— <i>parvulus</i>	50, 52	<i>Solpuga limbata</i>	66	— <i>mordax</i>	6, 14
— <i>viridiceps</i>	53	SOLPUGIDÆ	59	— <i>phæodactylus</i>	14
— <i>whitei</i>	52	<i>Tarantula</i>	50, 57	UROTRICHA	46
— <i>whitei</i>	50	— <i>azteca</i>	54	<i>Urotricha</i>	45
PLESIOCHACTAS	16	— <i>barbadensis</i>	51	VÆJOVIDÆ	4
<i>Plesiochactas</i>	5, 17	— <i>fuscimanus</i>	56	<i>Væjorida</i>	1
— <i>dilutus</i>	17	— <i>lavifrons</i>	55	VÆJOVIS	8
— <i>dugesi</i>	16, 17	— <i>palmata barbadensis</i>	51	<i>Væjovis</i>	4
RHOPALURUS	36	— <i>pumilio</i>	57	— <i>carolinianus</i>	24
<i>Rhopalurus</i>	19	— <i>reniformis</i>	57	— <i>cristimanus</i>	11
— <i>agamemnon</i>	37	— <i>whitei</i>	52	— <i>cristimanus</i>	8, 13
— <i>borellii</i>	37	<i>Tarantulina</i>	49	— <i>granulatus</i>	10
— <i>hemprichii</i>	37	THELYPHONIDÆ	46	— <i>granulatus</i>	8
— <i>junceus</i>	37	<i>Thelyphonus</i>	46	— <i>intrepidus</i>	13
— <i>laticauda</i>	36, 37	— <i>excubitor</i>	47, 48	— <i>mexicanus</i>	9
— <i>princeps</i>	37	— <i>giganteus</i>	47	— <i>mexicanus</i>	8, 10, 11, 13
<i>Scorpio americanus</i>	39	— <i>mexicanus</i>	47	— —, subsp. <i>dugesi</i>	9
— <i>australis</i>	32, 34	— <i>rufus</i>	47	— —, subsp. <i>smithi</i>	9
— <i>bahiensis</i>	39	TITYUS	39	— <i>nigrescens</i>	12, 13
— <i>biaculeatus</i>	33, 34	<i>Tityus</i>	19, 38, 42	— <i>nigropictus</i>	12
— <i>californicus</i>	24, 26	— <i>androcottoides</i>	43	— <i>nitidulus</i>	12
— <i>carolinianus</i>	24	— <i>androcottoides</i> ..	40, 44, 45, 58	— <i>nitidulus</i>	8, 13
— <i>de geerii</i>	30, 31, 34	— <i>bahiensis</i>	39	— <i>punctatus</i>	12
— <i>dentatus</i>	39	— <i>cambridgei</i>	40	— <i>punctatus</i>	8, 13
— <i>edwardsii</i> ..	30, 31, 34, 35, 36	— <i>cambridgei</i>	41, 42, 44, 45	— <i>pusillus</i>	10
— <i>elatus</i>	2	— —, subsp. <i>championi</i> ..	40	— <i>pusillus</i>	8
— <i>europæus</i>	38	— —, subsp. <i>championi</i> ..	41, 58	— <i>subcristatus</i>	10
— <i>flum</i>	39	— <i>carinatus</i>	30	— <i>subcristatus</i>	8, 11
— <i>gabonensis</i>	39	— <i>championi</i>	40, 42	— <i>variegatus</i>	11
— <i>gracilis</i>	32	— <i>columbianus</i>	42	— <i>variegatus</i>	8, 12, 13
— <i>granosus</i>	18, 22	— <i>congener</i>	33	<i>Væjovis</i>	8
— <i>guineensis</i>	39	— <i>crassimanus</i>	44	— <i>cristimanus</i>	11
— <i>hemprichii</i>	37	— <i>crassimanus</i>	40	— <i>granulatus</i>	10
— <i>junceus</i>	37	— <i>ducalis</i>	30	— <i>intrepidus</i>	13
— <i>lepturus</i>	2	— <i>festæ</i>	42	— <i>mexicanus</i>	9
— <i>maculatus</i>	39	— <i>festæ</i>	40, 45	— <i>nitidulus</i>	12
— <i>margaritatus</i>	30, 32	— <i>infamatus</i>	22, 24	— <i>pusillus</i>	10
— <i>nigrifrons</i>	33	— <i>macrurus</i>	30	— <i>spinigerus</i> , var. <i>punctata</i> ..	12
— <i>obscurus</i>	45	— <i>mulatinus</i>	33	— —, var. <i>variegata</i>	11
— <i>sayi</i>	33	— <i>nebulosus</i>	33	— <i>subcristatus</i>	10
		— <i>obscurus</i>	45		

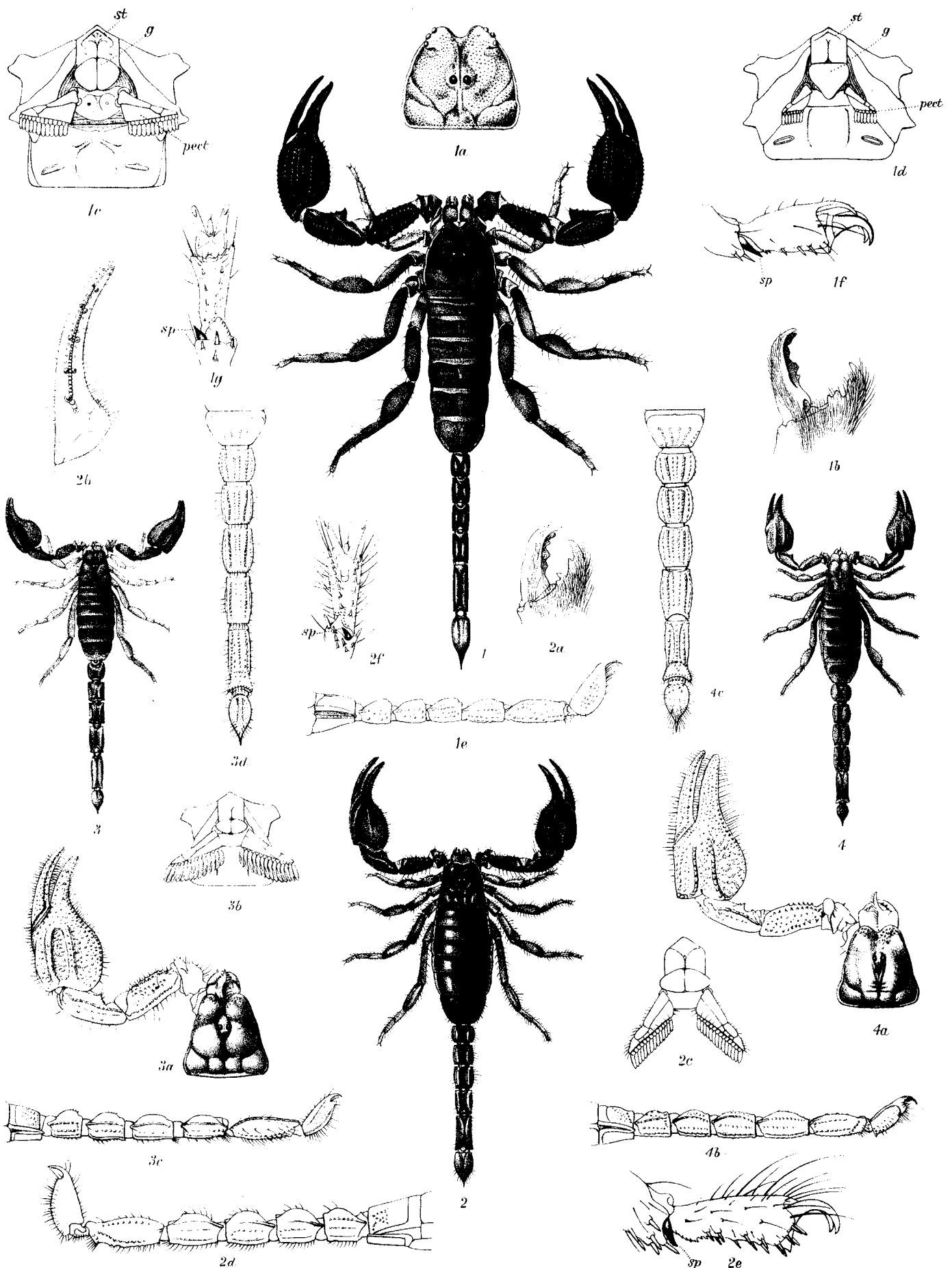
ERRATA.

Page	Line	
24	32	for <i>Centrurus</i> read <i>Centruroides</i> .
32	37	for <i>Scopio</i> read <i>Scorpio</i> .

ARACHNIDA.—SCORPIONES.

PLATE I.

- Fig. 1. *Opisthacanthus lepturus*, Pal. de Beauv., ♂, nat. size: 1 *a*, carapace; 1 *b*, extremity of chelicera from below; 1 *c*, lower side of posterior end of cephalothorax and of anterior end of abdomen of ♂ (*st.*, sternum; *g.*, genital operculum; *pect.*, pecten); 1 *d*, ditto of ♀, with lettering as above; 1 *e*, lateral view of tail; 1 *f*, anterior side of tarsus of fourth leg with single pedal spur (*sp.*); 1 *g*, inferior view of same.
2. *Diplocentrus whitei*, Gerv., ♀, from San Diego, Texas, nat. size: 2 *a*, extremity of chelicera from below; 2 *b*, movable finger of chela; 2 *c*, sternum, genital operculum, and pectines; 2 *d*, lateral aspect of tail; 2 *e*, lateral view of tarsus of fourth leg (*sp.*, pedal spur); 2 *f*, lower view of same (*sp.*, pedal spur).
3. *Diplocentrus whitei* (Gervais), ♂, from San Diego, Texas, nat. size: 3 *a*, carapace and chela; 3 *b*, sternum, genital operculum, and pectines; 3 *c*, lateral view of tail; 3 *d*, lower side of the same.
4. *Diplocentrus keyserlingi*, Karsch, ♂, nat. size (specimen from Mexico): 4 *a*, carapace and chela; 4 *b*, lateral view of tail; 4 *c*, ditto from below.



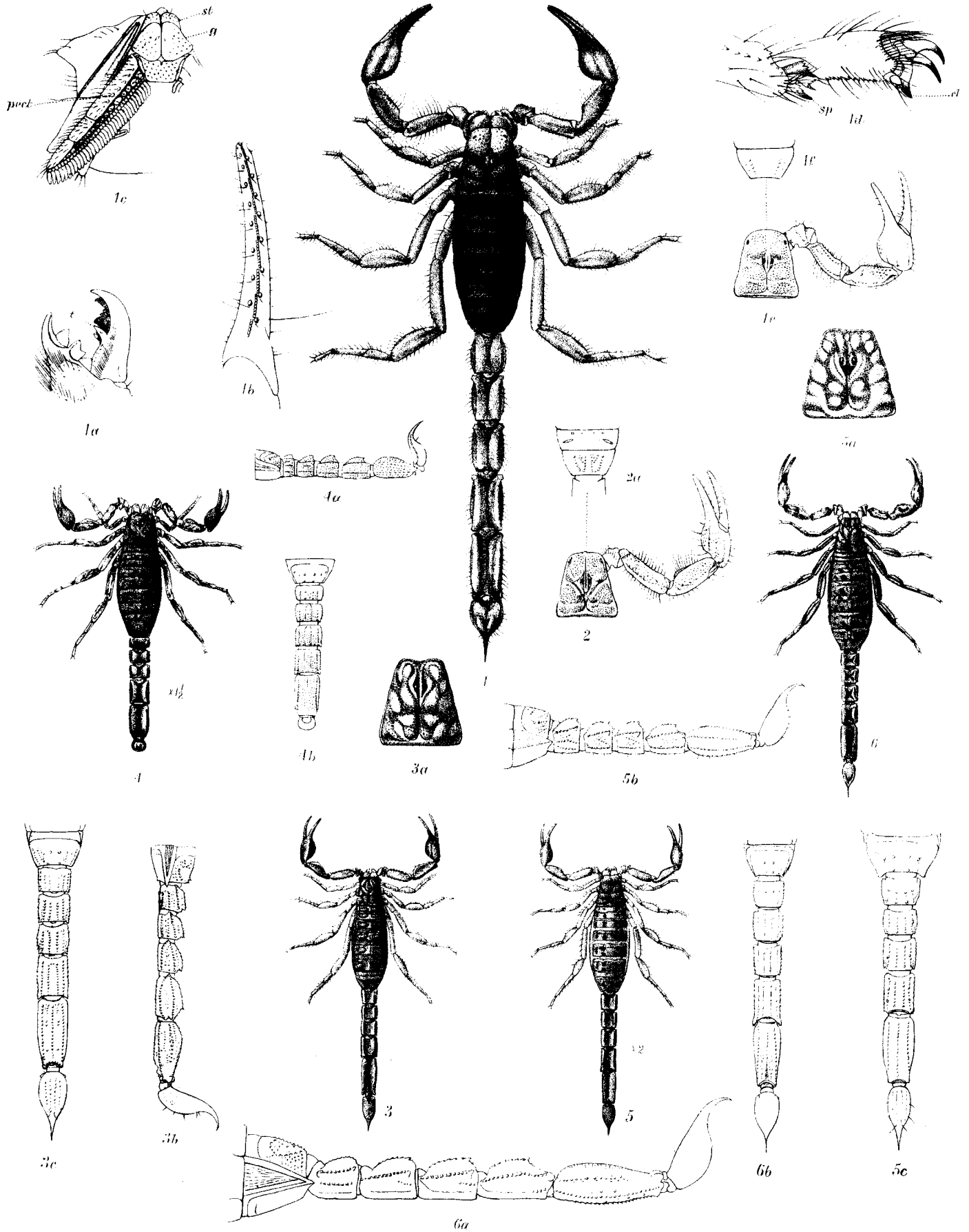
1,1a-g OPISTHACANTHUS LEPTURUS.
2,2a-f DIPOLOCENTRUS WHITEI.

3,3a-d DIPOLOCENTRUS WHITEI.
4,4a-c " KEYSERLINGI.

ARACHNIDA.—SCORPIONES.

PLATE II.

- Fig. 1. *Hadrurus aztecus*, sp. n., ♂, from Jalapa, nat. size: 1 *a*, extremity of chelicera from below (*t.*, tooth on lower border of movable digit); 1 *b*, movable finger of chela; 1 *c*, sternum (*st.*), genital operculum (*g.*), and pecten (*pect.*); 1 *d*, lateral view of tarsus of fourth leg (*sp.*, pedal spurs; *cl.*, inferior claw); 1 *e*, carapace and chela; 1 *f*, last abdominal sternum.
2. *Hadrurus hirsutus*, Wood, ♂, carapace and chela of specimen from San Bernardino; 2 *a*, extremity of abdomen from below.
3. *Vajovis mexicanus*, C. Koch, ♂, specimen from Mexico, nat. size: 3 *a*, carapace; 3 *b*, lateral surface of tail; 3 *c*, lower surface of same.
4. *Vajovis granulatus*, Poc., ♀, × 1½ (specimen from Mexico): 4 *a*, lateral surface of tail; 4 *b*, lower surface of same.
5. *Vajovis pusillus*, Poc., ♂, × 2: 5 *a*, carapace; 5 *b*, lateral surface of tail; 5 *c*, lower surface of same.
6. *Vajovis subcristatus*, Poc., ♂, nat. size (type from San Andres): 6 *a*, lateral surface of tail; 6 *b*, lower surface of same.



1,1a-f HADRIUS AZTECUS.
2,2a " HIRSUTUS.

3,3a-e VÆJOVIS MEXICANUS.
4,4a,b " GRANULATUS.

5,5a-c VÆJOVIS PUSILLUS.
6,6a,b " SUBCRISTATUS.

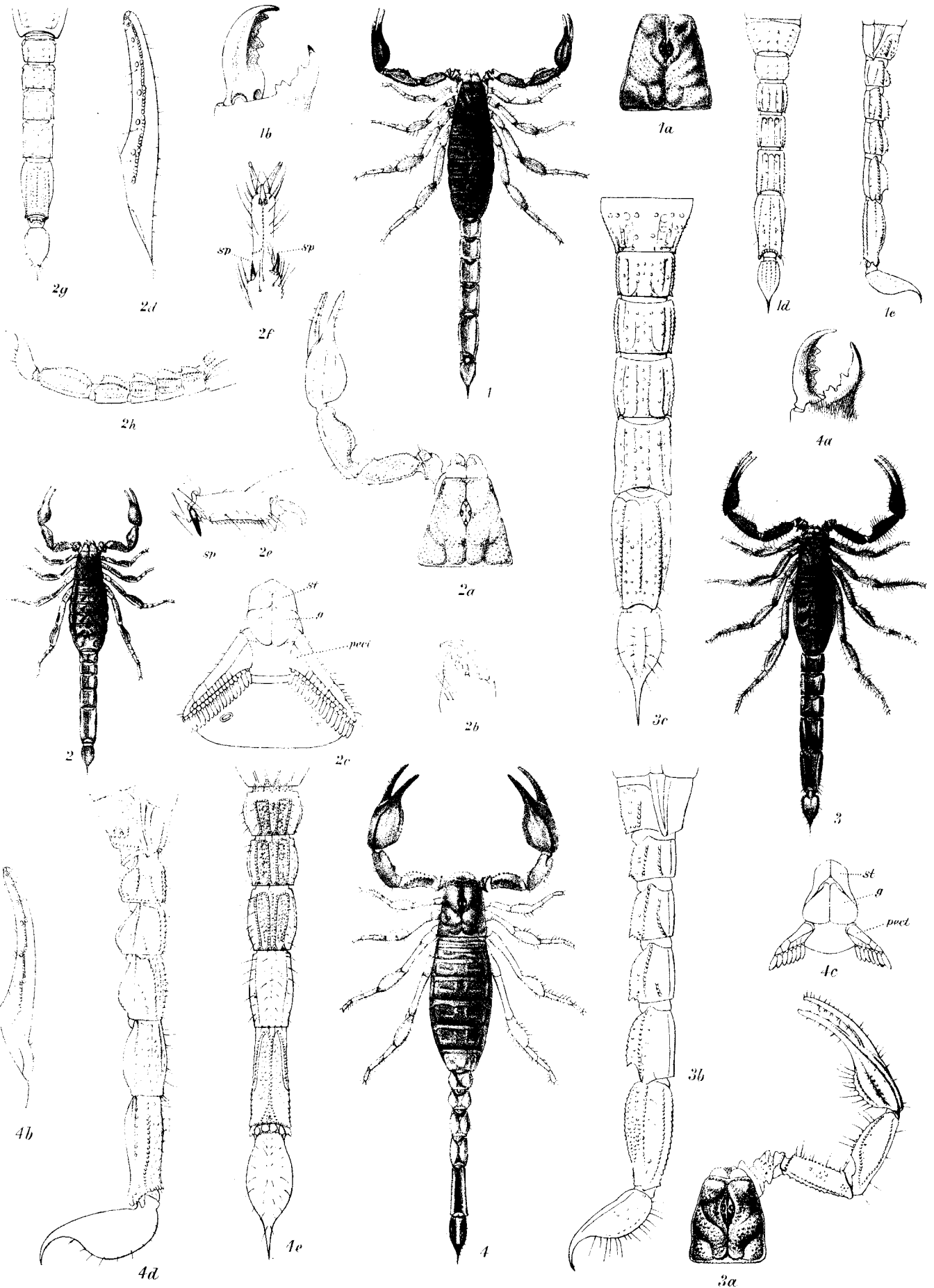
A.T.Hollick, del. J.Green, lith.

Mintern Bros. imp.

ARACHNIDA.—SCORPIONES.

PLATE III.

- Fig. 1. *Vajovis cristimanus*, Poc., typical specimen from Zacatecas, nat. size: 1 *a*, carapace; 1 *b*, digits of mandibles from below; 1 *c*, lateral side of tail; 1 *d*, inferior side of same.
2. *Vajovis variegatus*, Poc., typical specimen from Omilteme, nat. size: 2 *a*, carapace and chela; 2 *b*, extremity of mandible from above; 2 *c*, sternum (*st.*) of cephalothorax, genital operculum (*g.*), pectines (*pect.*), and first abdominal sternum; 2 *d*, dentition of movable finger of chela; 2 *e*, anterior side of foot of fourth leg (*sp.*, pedal spur); 2 *f*, inferior surface of same (*sp.*, spurs); 2 *g*, lower side of tail; 2 *h*, lateral side of same.
3. *Vajovis nitidulus*, Karsch, type of *V. nigrescens*, Poc., nat. size: 3 *a*, carapace and chela; 3 *b*, lateral side of tail; 3 *c*, inferior side of same.
4. *Anuroctonus phæodactylus*, Wood (♀), specimen from Denver, nat. size: 4 *a*, extremity of mandible from below; 4 *b*, movable finger of chela, to show dentition; 4 *c*, sternum (*st.*), genital operculum (*g.*), and pectines (*pect.*); 4 *d*, lateral side of tail; 4 *e*, inferior side of same.



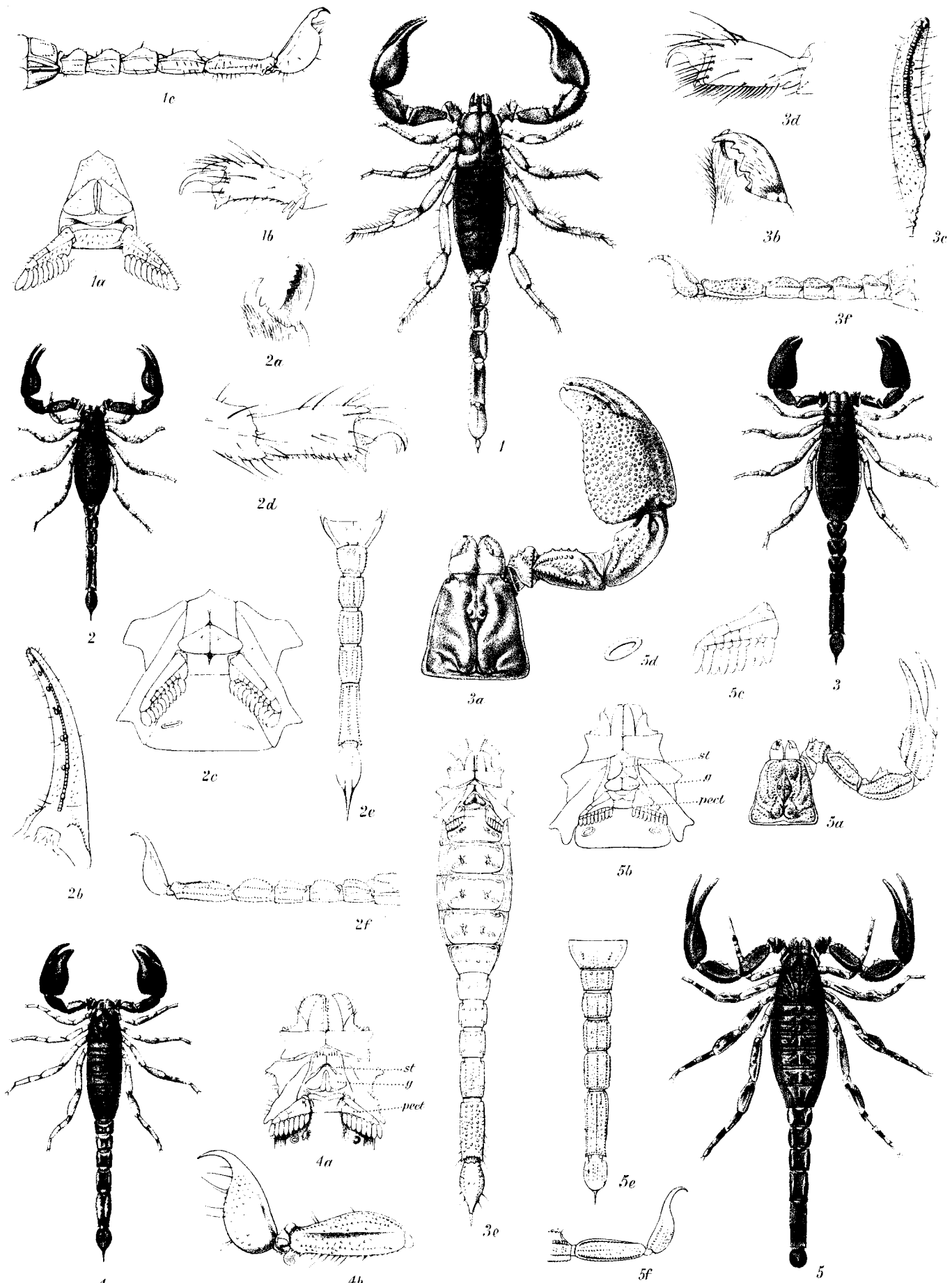
1, 1a-d VÆJOVIS CRISTIMANUS. 3, 3a-c VÆJOVIS NITIDULUS.
 2, 2a-h " VARIEGATUS. 4, 4a-e ANUROCTONUS PHÆODACTYLUS.

A.T.Hollick, del. J.Green, lith.

ARACHNIDA.—SCORPIONES.

PLATE IV.

- Fig. 1. *Anuroctonus phaodactylus*, Wood, ♂, example from San Bernardino : 1 *a*, sternum, genital operculum, and pectines ; 1 *b*, anterior side of foot of fourth leg ; 1 *c*, lateral side of tail.
2. *Uroctonus mordax*, Thor., specimen from California, nat. size : 2 *a*, extremity of mandible from below ; 2 *b*, movable finger of chela, to show dentition ; 2 *c*, sternum, genital operculum, pectines, and first abdominal sternum ; 2 *d*, anterior side of foot of fourth leg ; 2 *e*, lower side of tail ; 2 *f*, lateral side of same.
3. *Broteochactas delicatus*, Karsch, ♀, specimen from British Guiana, nat. size : 3 *a*, carapace and chela ; 3 *b*, extremity of mandible from above ; 3 *c*, movable finger of chela, showing dentition ; 3 *d*, foot of fourth leg, posterior side ; 3 *e*, lower side of trunk and tail ; 3 *f*, lateral surface of tail.
4. *Broteochactas delicatus*, Karsch, ♂, type specimen of *Broteas panamensis*, Thor., nat. size : 4 *a*, lower side of anterior extremity, showing sternum (*st.*), genital operculum (*g.*), and pectines (*pect.*) ; 4 *b*, lateral surface of extremity of tail.
5. *Plesiochactas dilutus*, Karsch, type specimen of *P. dugesi*, Poc., $\times 1\frac{1}{2}$: 5 *a*, carapace and chela ; 5 *b*, anterior extremity from below, showing sternum (*st.*), genital operculum (*g.*), and pectines (*pect.*) ; 5 *c*, pecten ; 5 *d*, one of the stigmata ; 5 *e*, lower side of tail ; 5 *f*, lateral surface of posterior end of tail.



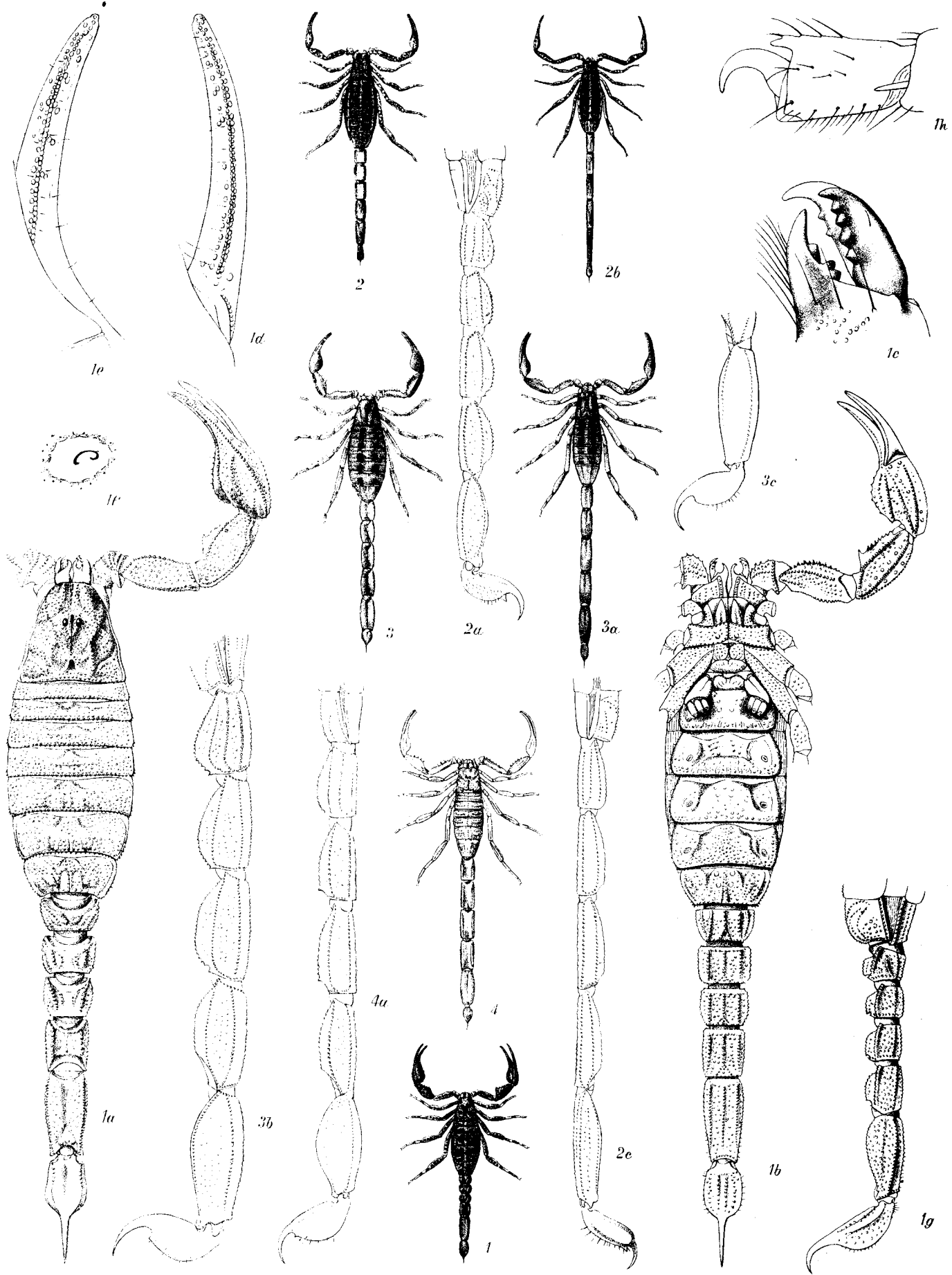
1, 1 a-c ANUROCTONUS PHÆODACTYLUS.
 2, 2 a-f UROCTONUS MORDAX.

3, 3 a-f, 4, 4 a-b BROTEOCHACTAS DELICATUS.
 5, 5 a-f PLESIOCHACTAS DILUTUS.

ARACHNIDA.—SCORPIONES.

PLATE V.

- Fig. 1. *Megacormus granosus* (Gerv.), specimen from Huatusco, ♂, nat. size: 1 *a*, dorsal surface, with legs and left chela removed; 1 *b*, ventral surface of the same; 1 *c*, extremity of chelicera from above; 1 *d*, movable, and 1 *e*, immovable digit of chela; 1 *f*, one of the stigmata; 1 *g*, lateral surface of tail; 1 *h*, tarsus of third foot.
2. *Centruroides thorelli*, Kraep., ♀, nat. size, specimen from Guatemala: 2 *a*, lateral view of tail of ♀. 2 *b*, *Centruroides thorelli*, Kraep., ♂, nat. size, specimen from Tecpam: 2 *c*, lateral view of tail of ♂.
3. *Centruroides elegans*, Thor., ♀, nat. size, specimen from Amula: 3 *a*, ♂, ditto; 3 *b*, lateral view of tail of ♀; 3 *c*, ditto of extremity of tail of ♂.
4. *Centruroides elegans*, Thor., subsp. *nigrovariatus*, Poc., ♂, nat. size, type from Oaxaca: 4 *a*, lateral view of tail.



1,1a-h MEGACORMUS GRANOSUS.
 2,2a-c CENTRUROIDES THORELLI.

3,3a-c CENTRUROIDES ELEGANS
 4,4a " " subsp. NIGROVARIATUS.

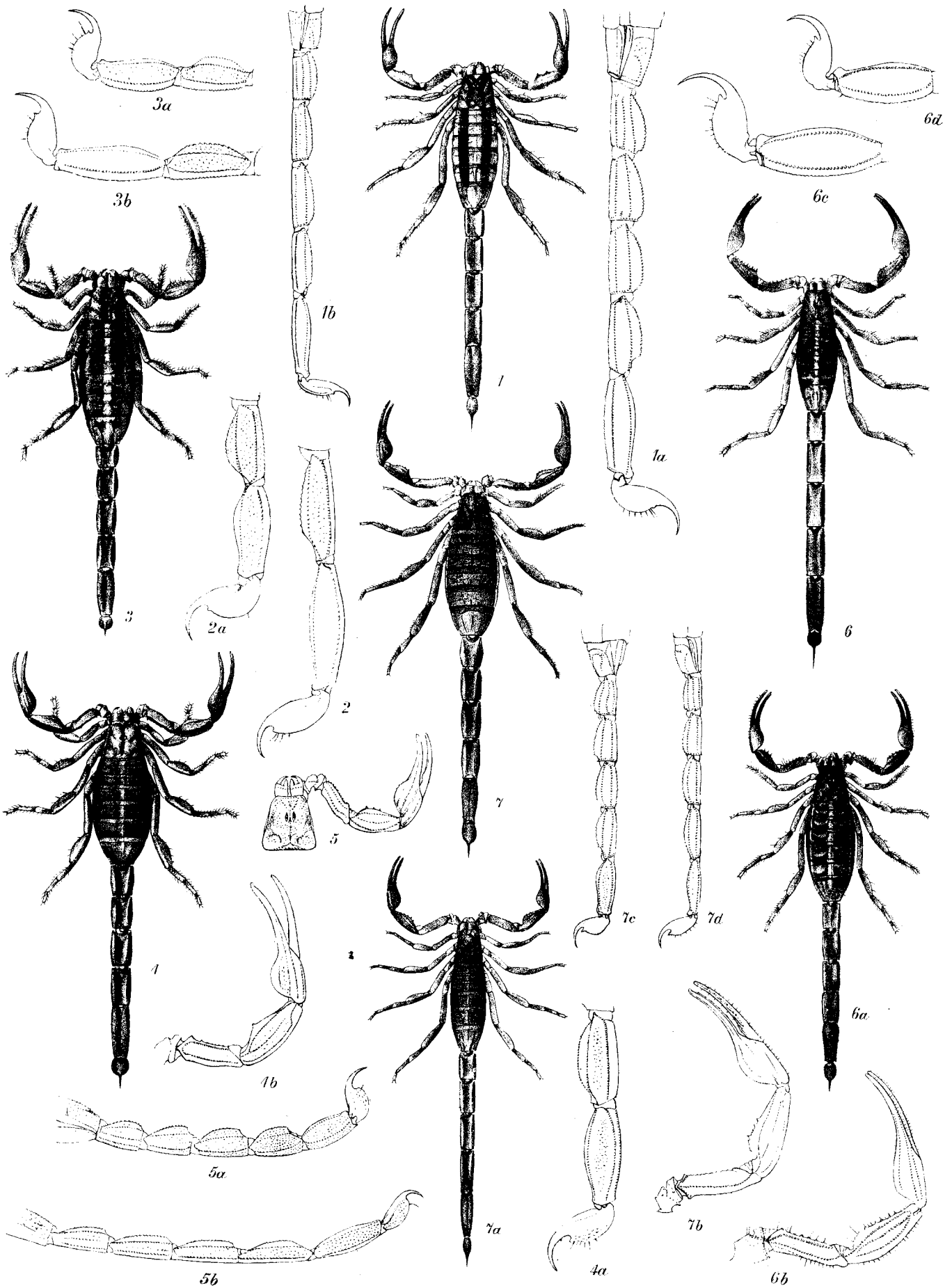
A. T. Hollick, del. J. Green, lith.

Mintern Bros. imp.

ARACHNIDA.—SCORPIONES.

PLATE VI.

- Fig. 1. *Centruroides vittatus*, Say, ♀, nat. size, specimen from San Diego, Texas: 1 *a*, lateral view of tail of ♀; 1 *b*, ditto of ♂.
2. *Centruroides vittatus*, Say, subsp. *suffusus*, Poc., lateral view of the extremity of tail of ♂, specimen from Ventanas; 2 *a*, ditto of ♀, also from Ventanas.
3. *Centruroides ornatus*, Poc., ♀, $\times 1\frac{1}{2}$, type-specimen from Jalisco: 3 *a*, lateral view of extremity of tail of ♀; 3 *b*, ditto of ♂.
4. *Centruroides subgranosus*, Kraep., ♀, $\times 1\frac{1}{2}$, co-typical example: 4 *a*, lateral view of extremity of tail; 4 *b*, upperside of right chela.
5. *Centruroides nitidus*, Thor., carapace and chela of ♀ specimen ticketed Brazil; 5 *a*, lateral view of tail of ♀; 5 *b*, ditto of ♂.
6. *Centruroides flavopictus*, Poc., ♂, nat. size, specimen from Jalapa: 6 *a*, ditto, ♀; 6 *b*, chela of ♂; 6 *c*, lateral view of posterior end of tail of ♂; 6 *d*, ditto of ♀.
7. *Centruroides ochraceus*, Poc., ♀, nat. size, specimen from Yucatan: 7 *a*, ditto, ♂; 7 *b*, right chela of ♂; 7 *c*, lateral view of tail of ♀; 7 *d*, ditto of ♂.



1, 1a, b CENTRUROIDES VITTATUS. 3, 3a, b CENTRUROIDES ORNATUS. 6, 6a-d CENTRUROIDES FLAVOPICTUS.
 2, 2a " " subsp. SUFFUSUS. 4, 4a, b " SUBGRANOSUS. 7, 7a-d " OCHRACEUS.
 5, 5a, b " NITIDUS.

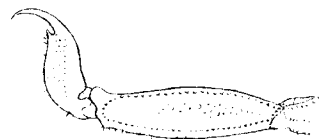
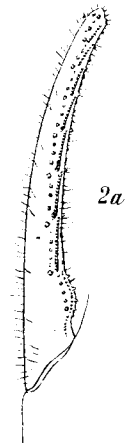
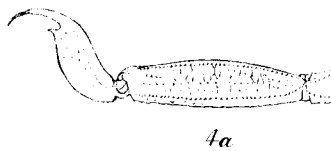
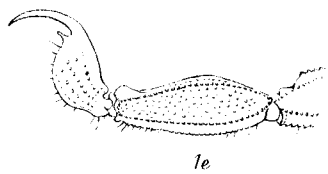
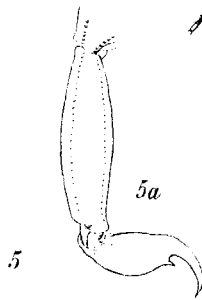
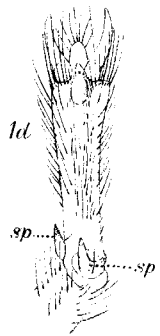
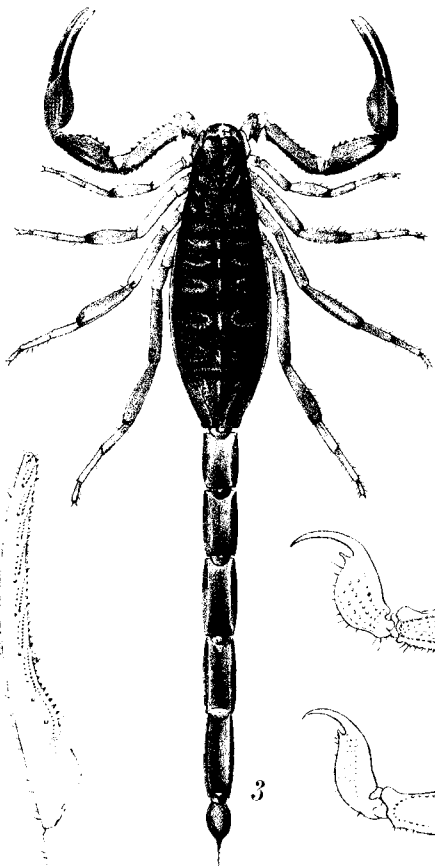
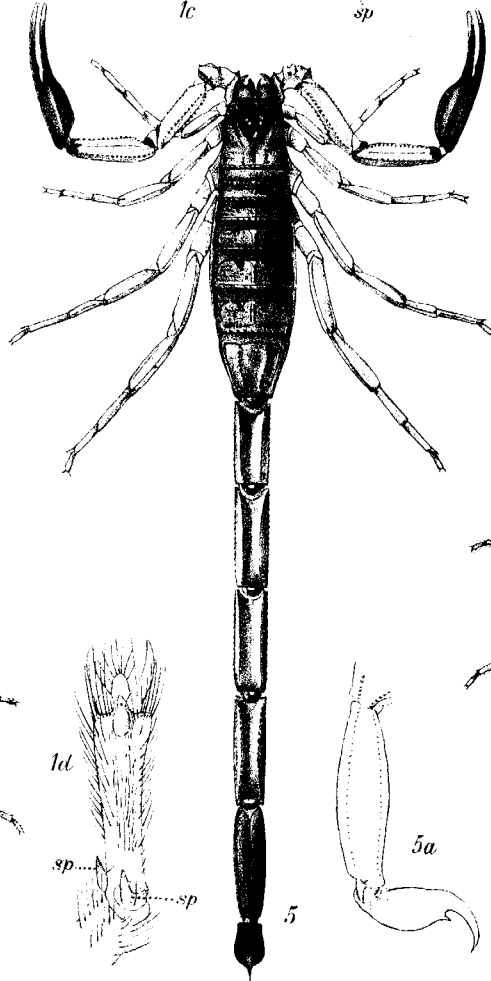
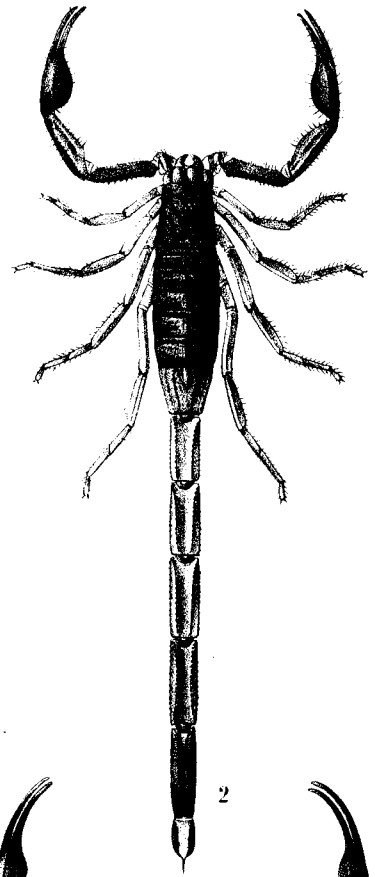
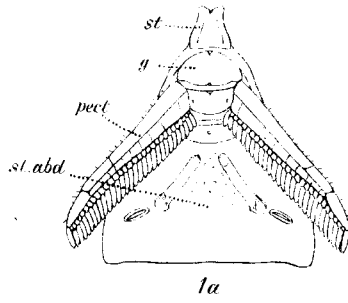
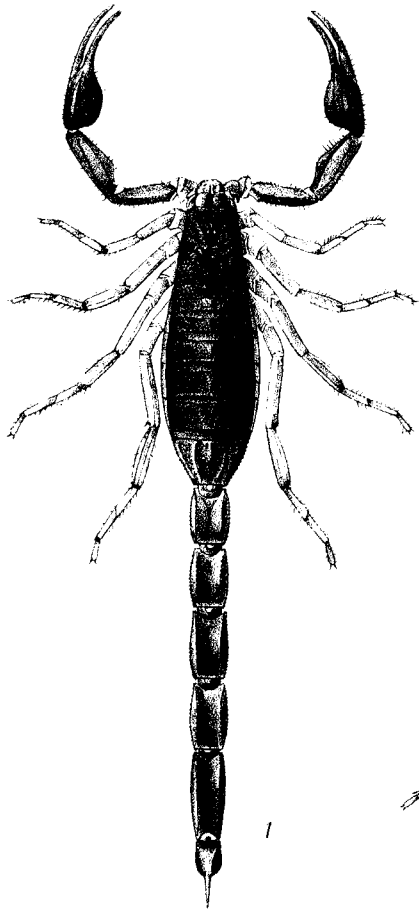
A. T. Hollick, del. J. Green, lith.

Mintern Bros. imp.

ARACHNIDA.—SCORPIONES.

PLATE VII.

- Fig. 1. *Centruroides margaritatus* (Gerv.), ♀, nat. size: 1 *a*, sternum of cephalothorax (*st.*), genital operculum (*g.*), pectine (*pect.*), and first abdominal sternum (*st.abd.*) showing the shallow grooves running obliquely inwards and forwards from the stigmata (to compare with the same structures in *Rhopalurus*, Plate VIII. fig. 5 *a*); 1 *b*, movable finger of chela to show dentition; 1 *c*, tarsus of fourth leg from the outer side to show the branched anterior pedal spur (*sp.*); 1 *d*, lower view of the same to show the two pedal spurs (*sp.*); 1 *e*, lateral view of extremity of tail.
2. *Centruroides margaritatus* (Gerv.), ♂, nat. size: 2 *a*, movable finger to show dentition; 2 *b*, lateral view of extremity of tail.
3. *Centruroides gracilis*, Latr., ♀, nat. size, from Honduras: 3 *a*, lateral view of tail.
4. *Centruroides gracilis*, Latr., ♂, nat. size, from Honduras: 4 *a*, lateral view of extremity of tail.
5. *Centruroides bicolor*, Poc., ♂, nat. size, from Pozo Azul de Pirris, Costa Rica: 5 *a*, lateral view of extremity of tail.



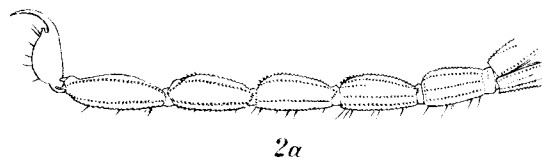
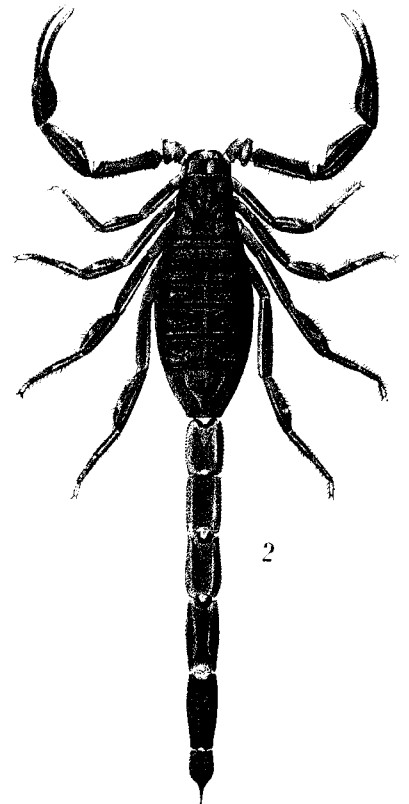
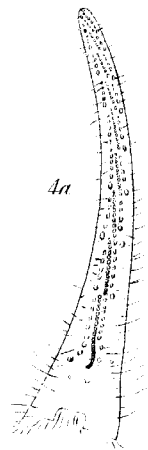
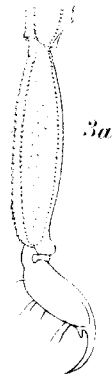
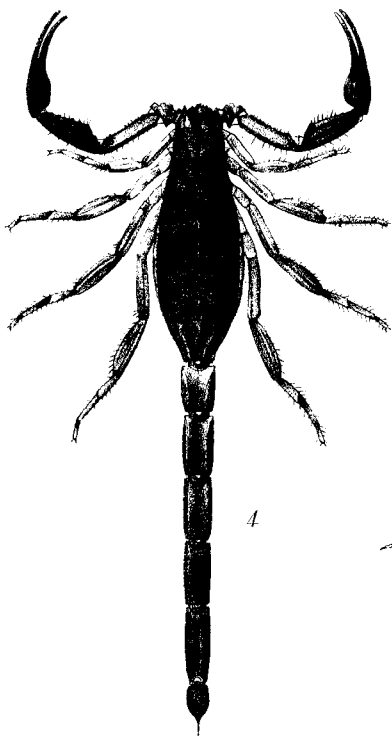
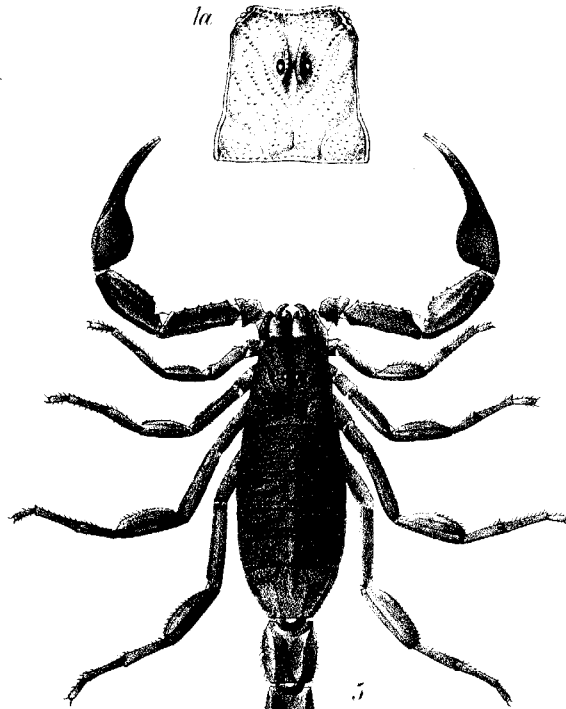
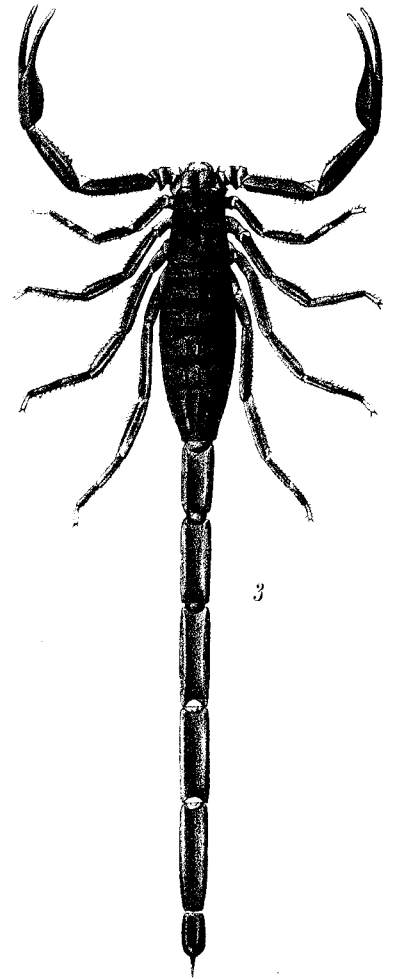
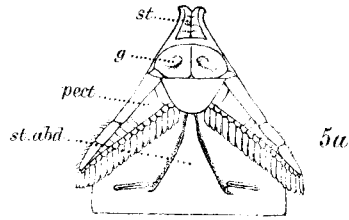
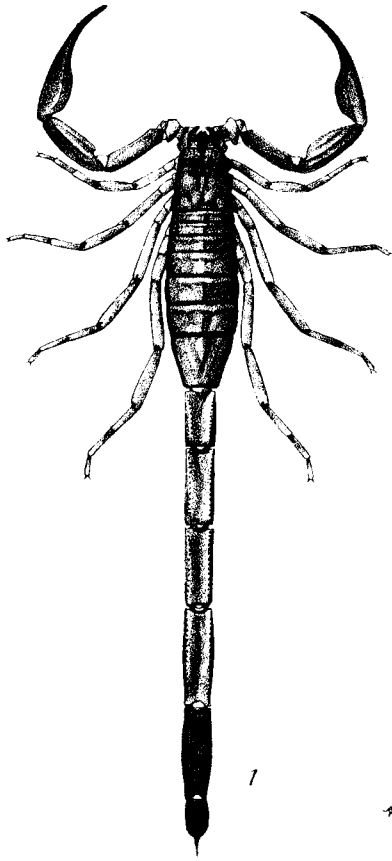
1,1a-e CENTRUROIDES MARGARITATUS.
2,2a,b " " "
3,3a " GRACILIS.

4,4a CENTRUROIDES GRACILIS.
5,5a " BICOLOR.

ARACHNIDA.—SCORPIONES.

PLATE VIII.

- Fig. 1. *Centruroides limbatus*, Poc., ♂, nat. size, typical example from Sipurio in Talamanca :
1 a, carapace.
2. *Centruroides nigrescens*, Poc., ♀, nat. size, from Xautipa, Mexico: 2 a, lateral view of tail.
3. *Centruroides nigrescens*, Poc., ♂, nat. size, typical example from Xautipa, Mexico :
3 a, lateral view of posterior end of tail.
4. *Centruroides fulvipes*, Poc., ♀, nat. size, typical example from Xautipa, Mexico :
4 a, movable digit of chela, to show the nine median rows of teeth characteristic of the *gracilis*-group of *Centruroides*.
5. *Rhopalurus junceus*, Herbst, ♀, nat. size, specimen ticketed "Mexico" in Mus. Brit. :
5 a, sternum of cephalothorax (*st.*), genital operculum (*g.*), pectines (*pect.*), and first abdominal sternum (*st.abd.*) showing the deep grooves running forwards from the inner extremity of the stigmata (to compare with the same structures in *Centruroides*, Plate VII. fig. 1 a).



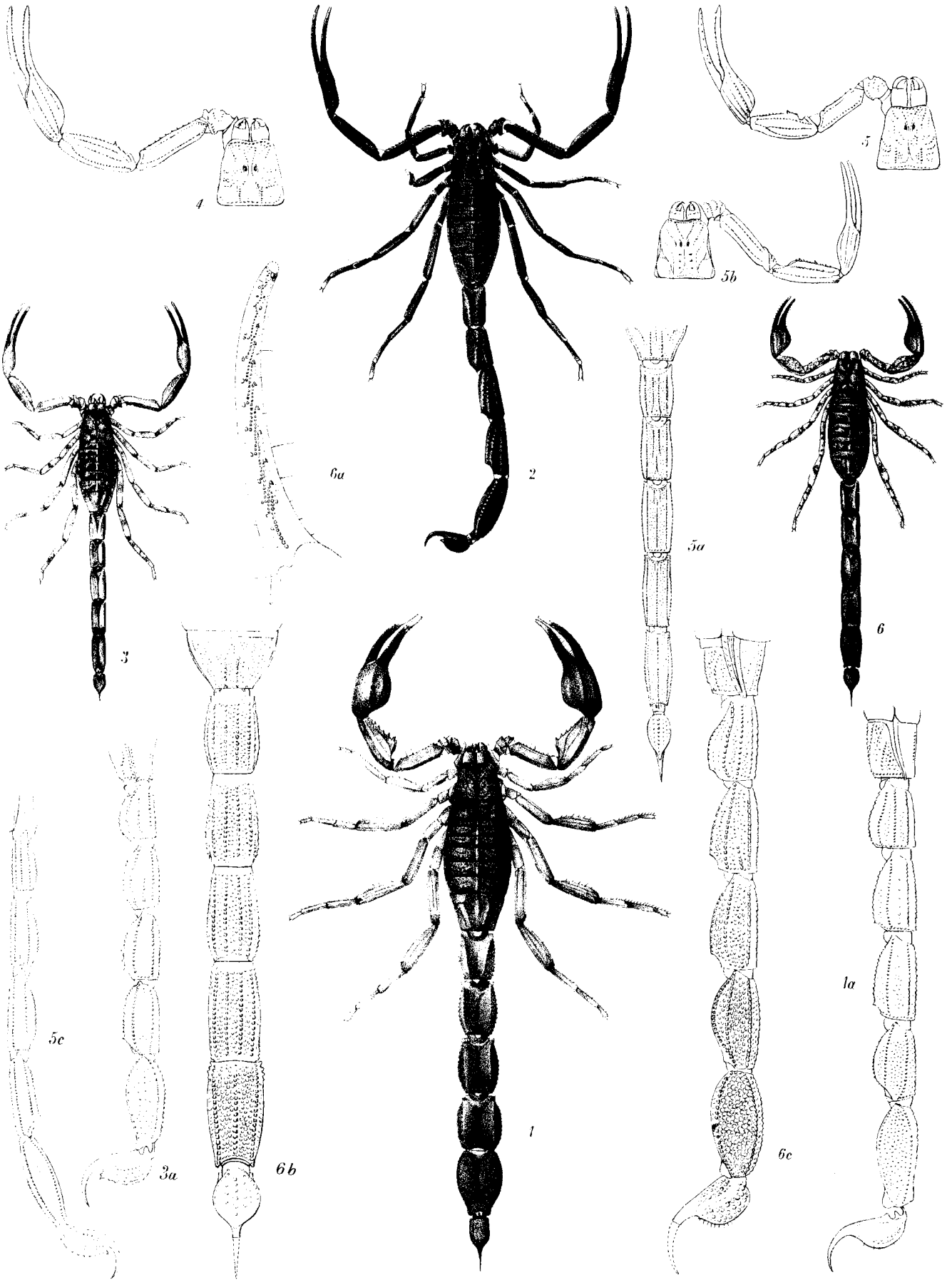
1,1a CENTRUROIDES LIMBATUS.
2,2a " " NIGRESCENS.
3,3a " " "

4,4a CENTRUROIDES FULVIPES.
5,5a RHOPALURUS JUNCEUS.

ARACHNIDA.—SCORPIONES.

PLATE IX.

- Fig. 1. *Rhopalurus junceus*, Herbst, ♂, nat. size, specimen ticketed Mexico in Mus. Brit.:
1 a, lateral surface of tail.
2. *Tityus cambridgei*, Poc., subsp. *championi*, Poc., ♂, nat. size, specimen from Darien. (The second leg on the left side is abnormal.)
3. *Tityus cambridgei*, Poc., subsp. *championi*, Poc., nat. size, type-specimen of *T. championi*, from Bugaba, to show the difference in colour due to immaturity: 3 a, lateral surface of the tail.
4. *Tityus festæ*, Bor., ♂, carapace and chela of left side of type-specimen from Darien, $\times 1\frac{1}{2}$.
5. *Tityus androcottoides*, Karsch, carapace and left chela of ♀; 5 a, inferior surface of tail of same; 5 b, carapace and right chela of ♂; 5 c, lateral surface of tail of the same, all $\times 1\frac{1}{2}$. Specimens from Demerara.
6. *Tityus crassimanus*, Thor., ♂, nat. size, specimen without locality in Mus. Brit.:
6 a, movable finger, to show dentition characteristic of the genus *Tityus*; 6 b, lower surface of tail; 6 c, lateral surface of tail.



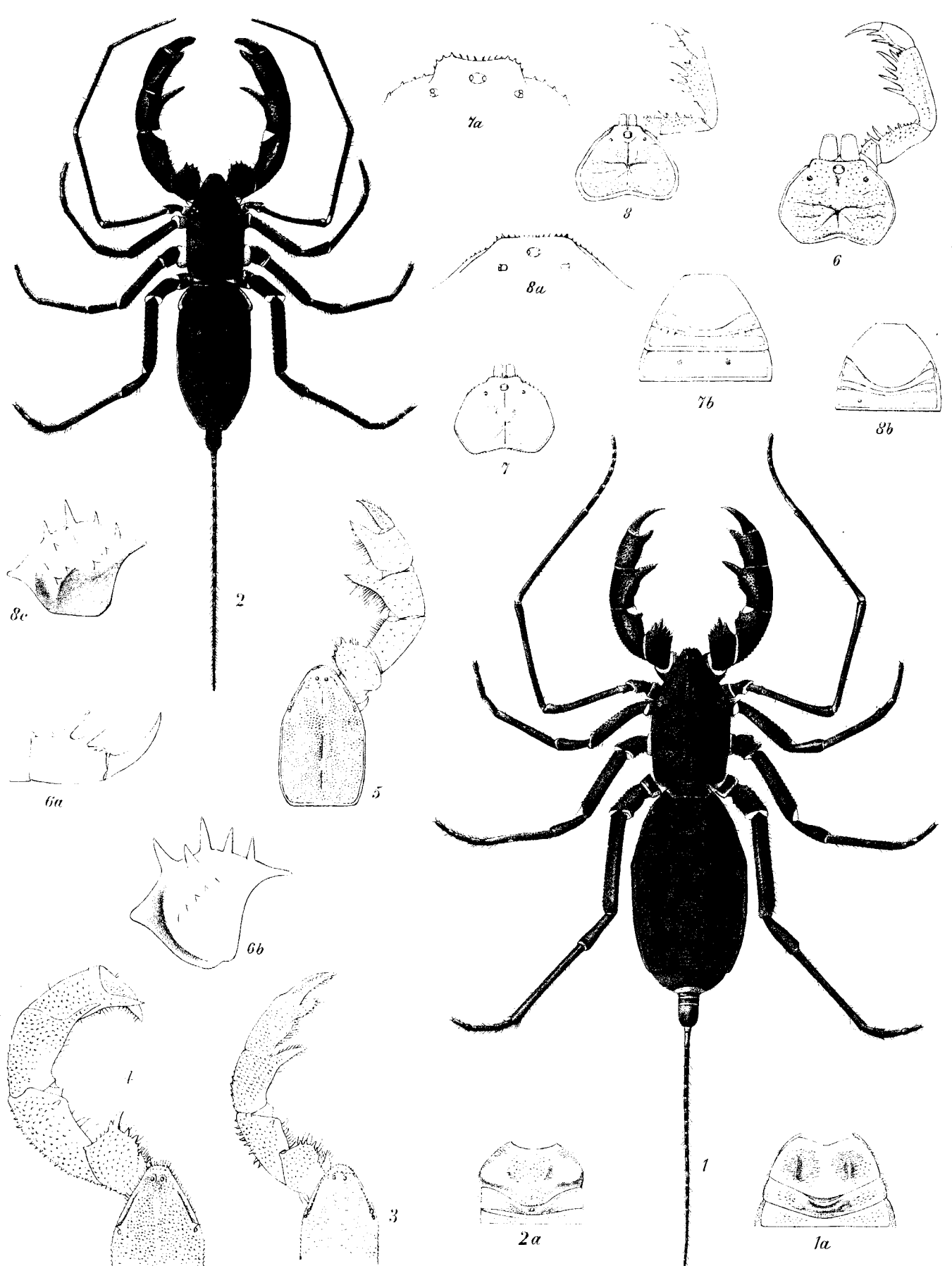
1, 1a RHOPALURUS JUNCEUS.
 2 TITYUS CAMBRIDGEI, *subsp.* CHAMPIONI.
 3, 3a " " " (immature)

4 TITYUS FESTE
 5, 5a-c " ANDROCOTTOIDES.
 6, 6a-c " CRASSIMANUS.

ARACHNIDA.—PEDIPALPI.

PLATE X.

- Fig. 1. *Mastigoproctus giganteus*, Luc., ♀, nat. size, typical form from Atoyac: 1 *a*, anterior three sternal plates of abdomen.
2. *Mastigoproctus giganteus*, Luc., ♂, nat. size, typical form from Atoyac: 2 *a*, anterior three sterna of abdomen.
3. *Mastigoproctus giganteus*, Luc., subsp. *mexicanus*, Butl., anterior end of carapace and left chela of type-specimen.
4. *Mastigoproctus giganteus*, Luc., subsp. *scabrosus*, Poc., anterior end of carapace and left chela of type-specimen from Oaxaca.
5. *Mastigoproctus hochirus*, Poc., carapace and right chela of type-specimen from Guatemala.
6. *Phrynus barbadensis*, Poc., ♂, carapace and right chela; 6 *a*, dorsal view of the fifth and sixth segments (hand and movable finger) of the chela; 6 *b*, trochanter of chela from above, to show the large spine in the middle of its anterior surface. Figures taken from type-specimen from Barbados.
7. *Phrynus parvulus*, sp. n., ♂, carapace; 7 *a*, anterior end of carapace, to show the shape of the frontal portion; 7 *b*, anterior sternal plates of abdomen, to show the size and shape of the first, second, and third sterna.
8. *Phrynus operculatus*, sp. n., ♂, carapace and chela; 8 *a*, anterior end of carapace, to show shape of frontal area; 8 *b*, anterior sternal plates of abdomen, to show size and shape of the first three sterna; 8 *c*, trochanter of right chela from above, to show the absence of large spine from its anterior surface.



1, 1a. MASTIGOPROCTUS GIGANTEUS.
 2, 2a. " "
 3. " "
 4. " "
 subsp. MEXICANUS.
 subsp. SCABROSUS.

5. MASTIGOPROCTUS LIOCHIRUS.
 6, 6a, b. PHRYNUS BARBADENSIS.
 7, 7a, b. " PARVULUS.
 8, 8 a-c. " OPERCULATUS.

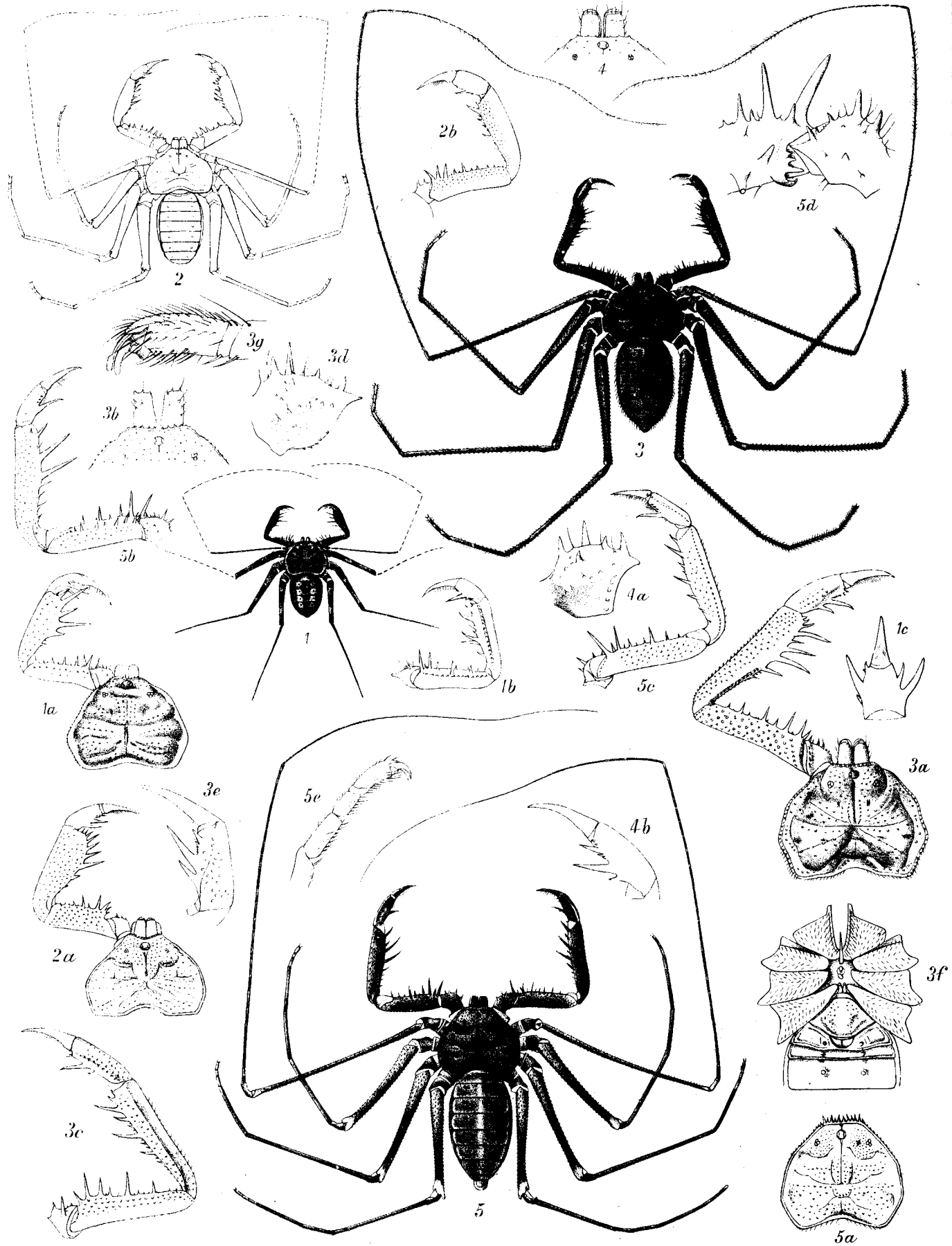
A T Hollick, del. J. Green lith.

Mintern Bros imp.

ARACHNIDA.—PEDIPALPI.

PLATE XI.

- Fig. 1. *Phrynus whitei*, Gerv., nat. size, figure taken from type-specimen: 1 *a*, carapace and chela; 1 *b*, left chela from the underside; 1 *c*, outer side of hand of left chela, showing the two long spines on the upper edge and the one long spine on the under.
2. *Hemiphrynus aztecus*, Poc., nat. size, type-specimen from Tuxtla: 2 *a*, carapace and chela; 2 *b*, left chela from underside.
3. *Hemiphrynus raptator*, Poc., ♂, nat. size, type-specimen from Teapa: 3 *a*, carapace and chela; 3 *b*, anterior portion of carapace with mandibles; 3 *c*, left chela from underside; 3 *d*, trochanter of right chela from above; 3 *e*, hand and claw (protarsus and tarsus) of right chela from above; 3 *f*, sternal surface of cephalothorax and of anterior four segments of abdomen; 3 *g*, extremity of tarsus of fourth leg.
4. *Hemiphrynus levifrons*, Poc., anterior portion of carapace with mandibles: 4 *a*, trochanter of right chela from above; 4 *b*, hand and claw (protarsus and tarsus) of right chela from above.
5. *Acanthophrynus spinifrons*, Poc., nat. size, type-specimen from Ciudad in Durango: 5 *a*, carapace; 5 *b*, left chela from above; 5 *c*, ditto from below; 5 *d*, trochanter and base of femur of the same, to show supernumerary spine; 5 *e*, tarsus of fourth leg.

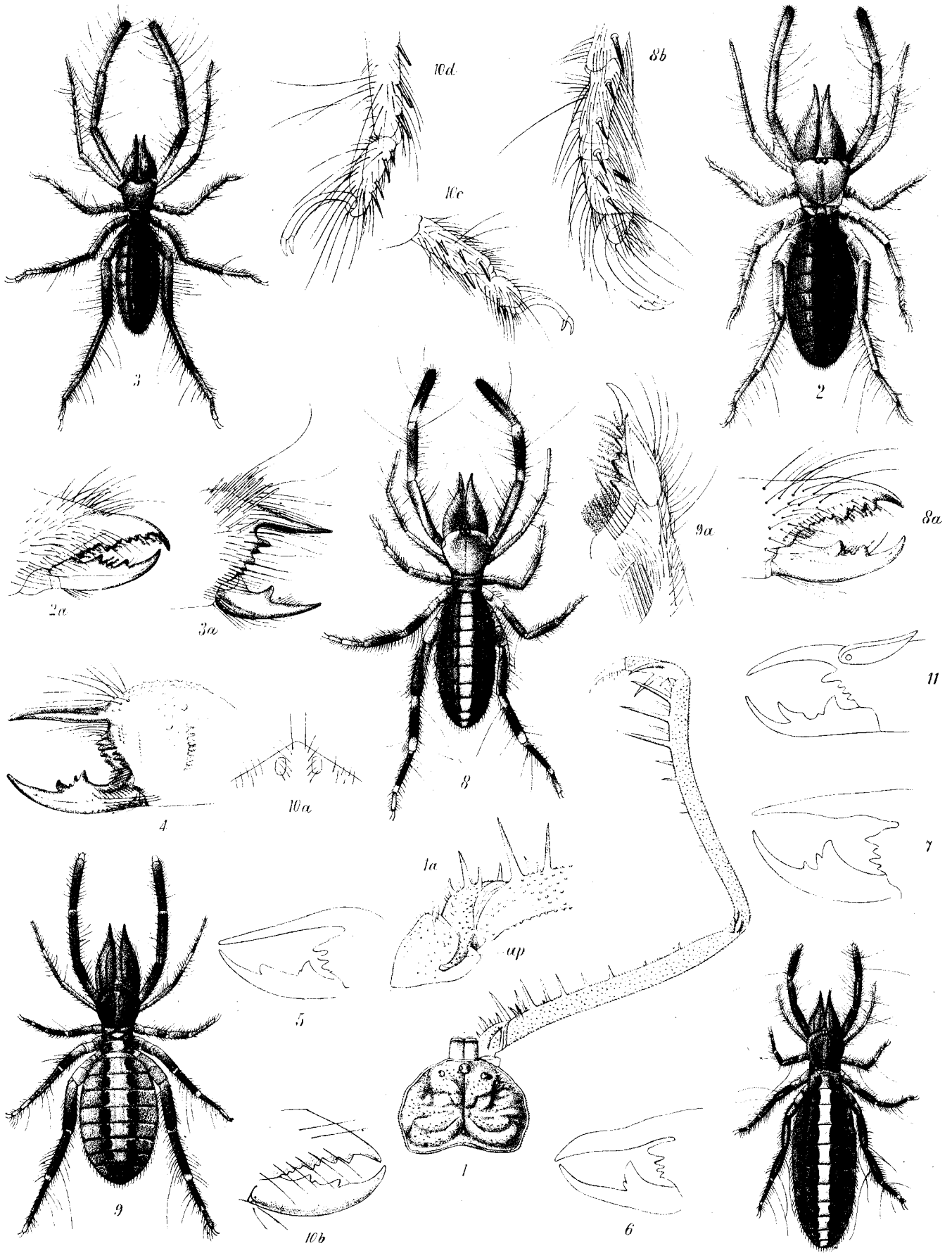


1, 1a-c PHRYNUS WHITEI. 3, 3a-g HEMIPHRYNUS RAPTATOR.
 2, 2a,b HEMIPHRYNUS AZTECUS. 4, 4a,b " LEVIFRONS.
 5, 5a-e ACANTHOPHRYNUS SPINIFRONS

ARACHNIDA.—PEDIPALPI AND SOLIFUGÆ.

PLATE XII.

- Fig. 1. *Heterophrynus chiracanthus*, Gerv., carapace and chela of type-specimen from Demerara, $\times 1\frac{1}{2}$; 1 *a*, base of chela from the underside showing the apophysis (*ap.*) on the trochanter.
2. *Eremobates aztecus*, sp. n., ♀, $\times 1\frac{1}{2}$, from Guanajuato: 2 *a*, jaws of the right mandible from the outer side.
3. *Eremobates aztecus*, sp. n., ♂, $\times 1\frac{1}{2}$, figure of type-specimen from Guanajuato: 3 *a*, jaws of right mandible from outer side.
4. *Eremobates toltecus*, Poc., ♂, inner aspect of the right mandible, with most of the hairs stripped off.
5. *Eremobates cinerascens*, Koch, ♂, jaws of mandible (after Kraepelin).
6. *Eremobates elongatus*, Koch, ♂, jaws of mandible (after Kraepelin).
7. *Eremobates formidabilis*, Sim., ♂, jaws of mandible (after Kraepelin).
8. *Ammotrecha stollii*, Poc., ♀, $\times 2$, type-specimen from Retalhuleu: 8 *a*, outer side of jaws of right mandible; 8 *b*, tarsus of fourth leg from the outer side.
9. *Ammotrecha picta*, sp. n., ♀, $\times 2$, type-specimen from Guatemala: 9 *a*, upper jaw of right mandible from the inner side.
10. *Hemiblossia vittata*, sp. n., ♀, $\times 3$, type-specimen from Guatemala: 10 *a*, ocular tubercle and anterior border of head-shield; 10 *b*, jaws of right mandible from the outer side; 10 *c*, posterior side of extremity of second leg; 10 *d*, anterior side of extremity of fourth leg.
11. *Dasia præcox*, Koch, inner aspect of right mandible (after Kraepelin).



1, 1a HETEROPHRYNUS CHIRACANTHUS. 5 EREMOBATES CINERASCENS. 8, 8 a, b AMMOTRECHA STOLLI.
 2, 2a EREMOBATES AZTECUS. 6 " ELONGATUS. 9, 9 a " PICTA.
 3, 3a " " 7 " FORMIDABILIS. 10, 10 a-d HEMIBLOSSIA VITTATA.
 4 " TOLTECUS. 11 DÆSIA PRÆCOX.

A.T. Hollick, del. J. Green lith.

Mintern Bros imp.